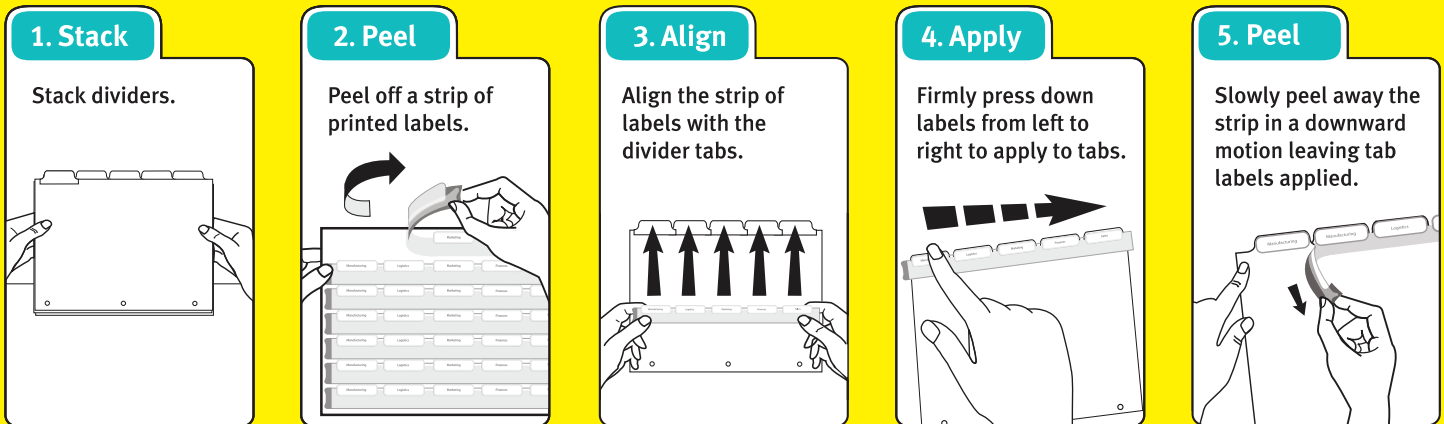




# Introducing the NEW Easy Apply™ Label Strips for Avery Index Maker® Clear Label Dividers

Now it's easier than ever to create custom, professional-looking dividers from your desktop!



View a demo of this application process online at [www.avery.com/demo/im](http://www.avery.com/demo/im)

## Printing Tips

To optimize your printer performance when using Easy Apply Label Sheets:

For best results, first print on the Easy Apply Practice Sheet to ensure the label sheet is fed into your printer in the correct direction. The practice sheet is located on the back of the supplemental instruction sheet.

Always feed Easy Apply Label Sheets through your printer's Manual Feed Tray (see instructions below).

**1.** In the Print Dialog, select your printer and click Properties.

**2.** Under Paper or Paper Source, set the Paper Source to Manual Feed (also known as the Multipurpose tray).

**3.** Set Media or Media Type to Labels (or Thick Paper or Card Stock if available on your printer).

*Note: Your Print Dialog may vary from what's shown here.*

If you have any questions or comments about these or any other Avery products or software solutions, please contact our Consumer Service Center at 1-800-GO-AVERY (1-800-462-8379) or visit our website at [www.avery.com](http://www.avery.com).



**Index Maker® Clear Label Dividers**  
Printshop Quality. Desktop Easy™